

# DNSBOX400

## POWERFUL DNS, DHCP & IPAM APPLIANCE

**DNSBOX400 is a master appliance for integrated IP Address Management, DNS and DHCP (DDI) to make managing large IP spaces easier. It is a central management server for controlling unlimited remote DNS and DHCP servers and enabling integrated administration by a team of any size, distributed anywhere.**

### Advanced, integrated IP Address Management

Planning, tracking and managing IP address usage is a complex, time consuming job.

Traditional tools such as spreadsheets, bespoke databases or standalone IP address management software can't cope. There are two main problems:

- There are now so many IP addresses to manage, in more complex ways, very often they need to be manually edited - this is tedious and error-prone.
- In big organizations, a large IP address space is often managed by many different people. It's difficult to control actual IP address usage and keep it in line with planned allocation.

**DNSBOX400** solves these problems. It combines carrier-class IP Address Management software with the security, reliability and ease-of-use of the appliance format to make managing large, complex IP address spaces easier.

Full integration with DNS and DHCP means corresponding data sets are visible within one interface and are automatically synchronized. So now there's no difference between what you planned to use and what you actually use.

If you're happy with your existing DNS/DHCP setup, you can deploy **DNSBOX400** to overlay IP Address Management onto your system, giving you the benefits of advanced, integrated IP Address Management without the cost of scrapping what you already have.

### DNS/DHCP administration made easy

**DNSBOX400** is packed with automation and data validation features such as:

- Automated updating of DNS zone serial numbers and reverse DNS records
- Validation of all entries to DNS and DHCP configuration
- Automated address calculation and suggesting available IPs and subnets
- Automated zone signing and DNSSEC key rollover

Changes made in the IPAM interface are automatically validated, updated in other sections of the **DNSBOX400** and propagated to the relevant slaves.

**DNSBOX** makes administration much simpler, less error-prone, and slashes admin man-hours by more than 50%, giving organisations that administer DNS and DHCP every day payback in just a few months.



### DNSBOX400 Benefits

#### Efficient management of scarce IPs

- Eliminate spreadsheets
- Synchronised with DNS. Changes only entered once
- Log use of blocks, subnets and individual IPs for accurate provisioning
- Dynamically detect new devices
- Built-in network scanning identifies rogue and orphaned IP addresses

#### Reuse existing DNS infrastructure

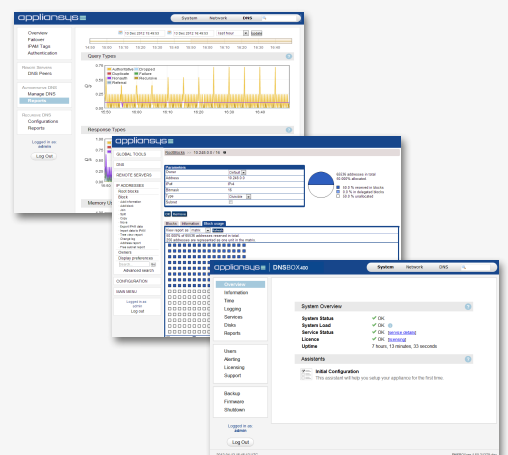
- Compatible with BIND compliant systems
- Integrates with Windows Active Directory

#### Eliminate DNS downtime

- Data syntax validation
- Data logic validation

#### Streamline management with built-in automations

- Manage more data with existing staff
- Reallocate senior staff to high value operation
- Assign routine tasks to junior staff
- Central Recursive Management



## Secure from the ground up

With DNS a popular target for attack by hackers **DNSBOX400** incorporates industry standard architecture and DNS security best practice from the outset. By only communicating with authoritative slaves it can be completely hidden from the world.

All connections to the User Interface are secured using SSL and connections between **DNSBOX400** and DNS and DHCP slaves are secured using combinations of SSH, IPSEC, TSIG and DNSSEC, preventing the unauthorised alteration of your data.

## Controlled Administration

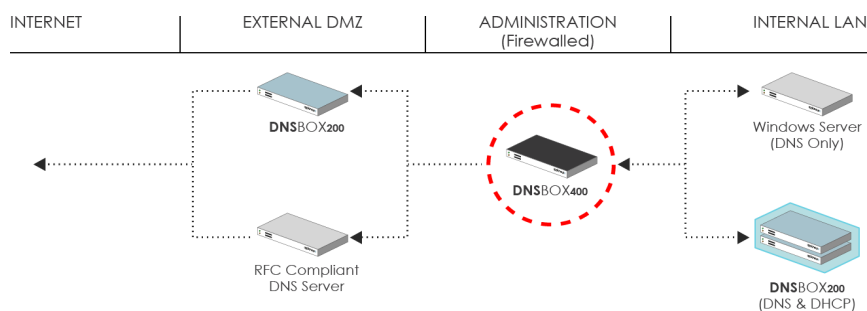
Accessible remotely via a secure web interface, **DNSBOX400** offers full support for 'distributed administration'. The 'User Groups' feature allows a central super-administrator to maintain tight granular control over the rights of delegated administrators.

In other words, it's great for organisations with multiple administrators, ensuring the management task can be shared in a very efficient, controlled and coordinated way.

## Scaling and availability for growing networks

There are no set limits to the amount of data **DNSBOX400** can manage. Furthermore, it supports an unlimited number of concurrent administrators and remote secondary servers. It can be used for centralised management of any RFC compliant DNS server with additional benefits when used with **DNSBOX200**.

**DNSBOX400** can be deployed with a failover unit which is continuously replicated from the active master. In the event of failure this will ensure there is no impact on network availability.



## Rock solid appliance

**DNSBOX400** is a hardened Linux-based appliance optimized for performance, robustness, security and ease of management.

The custom Linux OS has been built from the ground up, supporting the core application with only the most critical network tools.

A key aspect is use of solid-state storage, with no hard drives in these appliances. Hard drives account for 90% of hardware failures, so **DNSBOX400** is 10x more reliable than alternatives. If power fails, there is no loss of data or settings and reboot is immediate.

## Technical Specifications

	DNSBOX420	DNSBOX430
<b>Usage:</b>	Standard Duty	Heavy Duty
<b>Form Factor:</b>	1U Rack Mountable	
<b>Max IPs licenced:</b>	Unlimited	
<b>Ethernet:</b>	2xGbE Network Interface	
<b>Flash Memory:</b>	1xOS/application, 1xuser-data	
<b>OS:</b>	Linux	
<b>Dimensions:</b>	19x1.75x17 (ins); 48x4.5x44 (cm)	
<b>Weight:</b>	6.7 kg	
<b>Power:</b>	100-240V AC	
<b>Max Power:</b>	220W	
<b>Operating Temp:</b>	10 to 37.8 C (50 to 100 F)	

## DNSBOX400 - Key Features

### IP address management

- Automated synchronisation with live DNS and DHCP data
- Integrated network scanning for rogue and orphaned IP addresses
- Calculate possible values for new blocks and individual IP addresses automatically
- Graphical reporting on IP space usage
- Freely definable IPAM information fields
- Import and export data in CSV format
- Command Line Interfaces for scripting large or complex tasks
- XML-RPC and SOAP APIs for integration with external systems

### Simplify DNS/DHCP administration

- Built in automation and data validation
- Support for DNS Views
- Support for DNSSEC incl wizard for simplified zone signing
- ENUM support for mapping telephone numbers to IP addresses
- Support for IPv4 and IPv6 records
- Support for an unlimited number of remote secondary servers
- Agentless integration with Microsoft DNS & DHCP
- Perform bulk changes, including TTL zones
- Centrally monitor DNS/DHCP performance on all linked servers

### Auditing & control

- Built-in local and centralised user authentication incl. for RADIUS and LDAP
- Fully granular User Groups feature to maintain tight control over the rights of delegated users
- Support for unlimited concurrent administrators
- Transaction log with audit trail (who, what, when); unlimited undo and redo
- Pre-populated host and zone templates

### Appliance management

- Appliance Management
- Secure web interface
- Failover replicates all DNS and DHCP data to a Hot-Standby unit
- Simple backup, restore and upgrade facility: firmware update with option to rollback to previous version
- Graphical reports on performance, usage and system health
- Email, SMS and SNMP alerts for remote monitoring
- Supports output to remote Syslog server